

Applications for:

Fast Vessels WVS/WLS

Engine Rating up to 1,400 kW

Fast Vessels WVS/WLS

Engine Rating up to 5,000 kW

Fast Ferries VLJ

Engine Rating up to 13,200 kW

Work Boats WAF/LAF

Engine Rating up to 1,200 kW

Work Boats WAF/LAF

Engine Rating up to 8,500 kW

Work Boats 3,000 - 20,000 kW

SVA/SVAL 750 - 1250

Work Boats VA

Engine Rating up to 6,000 kW

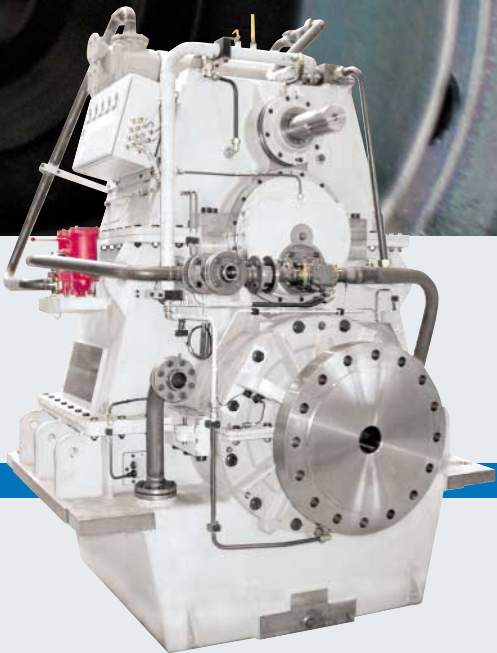
Work Boats DLG/DLGF

Engine Rating up to 15,000 kW

Work Boats SVA¹/SVAL²

Engine Rating¹ up to 20,000 kW

Engine Rating² up to 13,000 kW

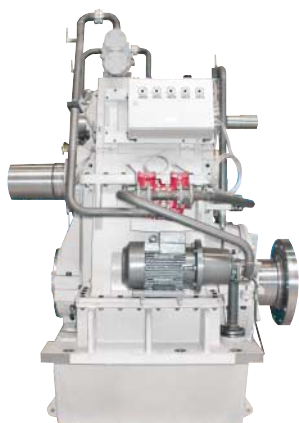


Y O U R P A R T N E R F O R T H E F U T U R E



Applications for Work Boats

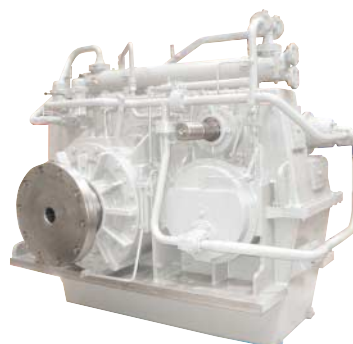
SVA/SVAL 750 - 1250



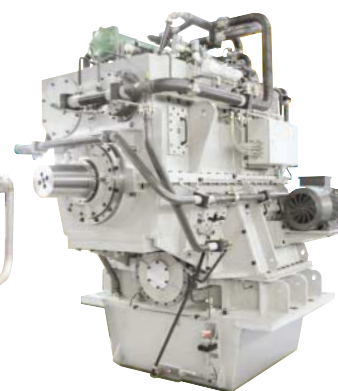
Reduction gearbox with PTO, vertically offset



Reduction gearbox with built-in clutch and PTO/PTH, vertically offset



Reduction gearbox with PTO, horizontally offset



Reduction gearbox with built-in clutch and PTO/PTH, vertically offset

Advantages

Gearboxes of the SVA and SVAL series have been specially developed for work boats such as tugs, container-vessels, freighter, tanker and specialpurpose ships with similarly high performance demands.

We have the backing of over 75 years of experience in marine

gearbox production and use state-of-the-art computation tools and production technologies.

Owing to their design for specific areas of deployment, the reduction gearboxes of the SVA series, as well as the reduction gearboxes of the SVAL series with built-in clutch offer various special advantages:

- High operating reliability
- Simple operation and maintenance
- Compact dimensions
- Low operating noise

Gearbox Selection

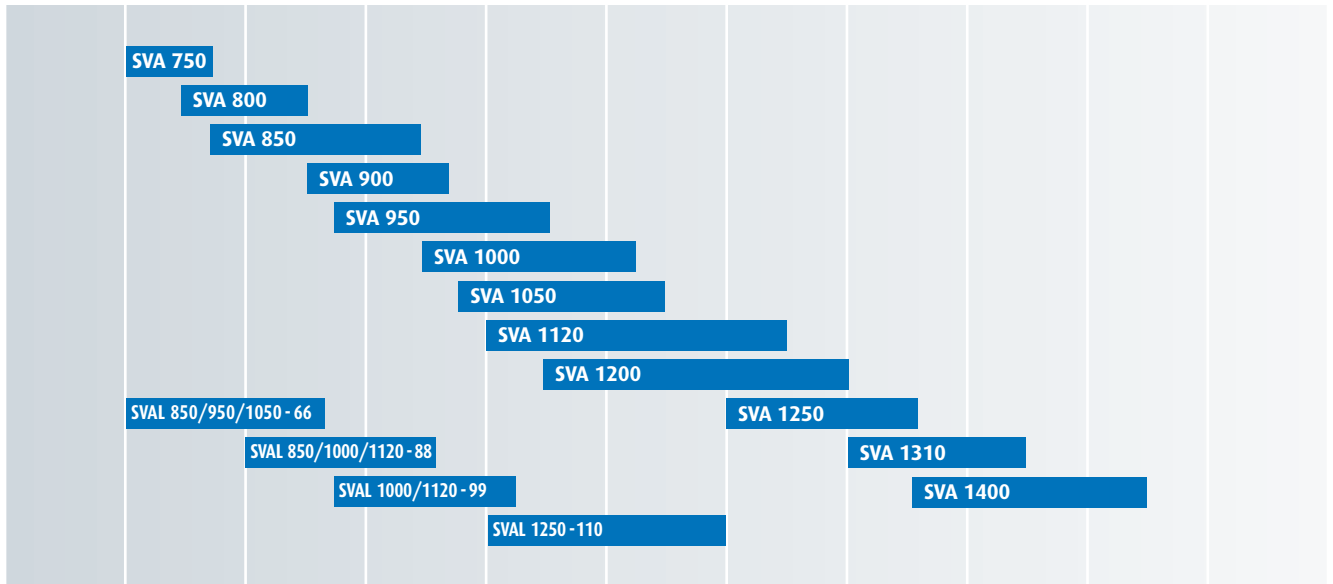
The selection diagram opposite gives an overview of the performance ratings of the basic SVA and SVAL types.

For the final selection of gearboxes please contact REINTJES.

DESIGNED FOR HEAVY DUTY APPLICATIONS



kW	3000	5000	7000	9000	11000	13000	15000	17000	19000	21000
BHP	4020	6700	9380	12060	14740	17420	20100	22780	25460	28140

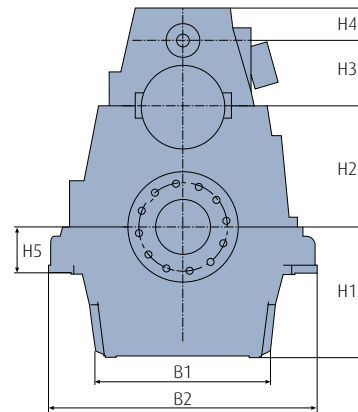
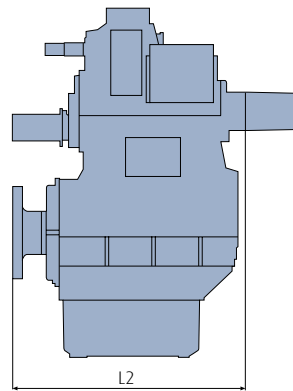


Marine gearboxes

SVA 750-1400

SVA 750 - 1400

Reduction gearbox
Vertically offset*



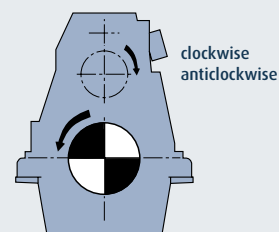
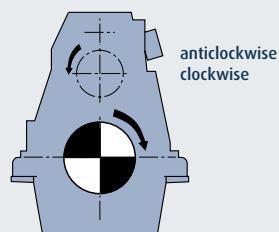
Gearbox SVA	Main dimensions (mm)								Weight kg ¹⁾
	B1	B2	H1	H2	H3	H4	H5	L2	
750	1198	1870	870	750	500	450	280	1663	12000
800	1198	1870	870	800	731	260	280	1850	13200
850	1410	2240	1020	850	500	620	390	1977	16000
900	1410	2240	1020	900	570	750	390	2066	17000
950	1470	2340	1060	950	570	600	350	2250	18800
1000	1630	2440	1100	1000	570	920	380	2180	19500
1050	1628	2440	1100	1050	570	1030	380	2180	21000
1120	1628	2560	1150	1120	650	730	380	2300	22500
1200	2106	3100	1245	1200	650	1000	80	2260	31000
1250	1725	3100	1400	1250	650	490	80	2504	34000
1310	-	-	-	-	-	-	-	-	-
1400	-	-	-	-	-	-	-	-	-

*Dimensions of horizontally offset SVA on request.

¹⁾Gearbox standard design (dry). Dimensions and weights not strictly binding. Subject to changes.

Direction of rotation SVA/SVAL

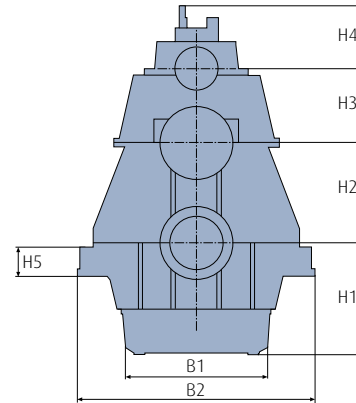
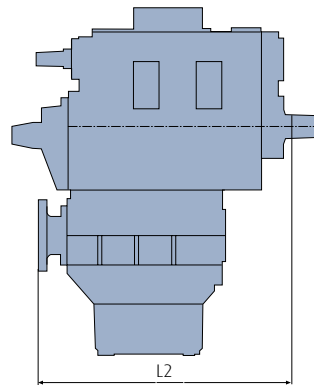
Seen from propeller onto
engine flywheel in
direction of travel ahead





SVAL 850 - 1250

Reduction gearbox with hydraulically operated clutch.
Vertically offset*



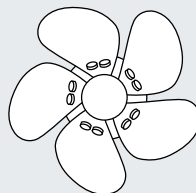
Gearbox SVAL	Main dimensions (mm)								Weight kg ¹⁾
	B1	B2	H1	H2	H3	H4	H5	L2	
850 - 66	-	-	-	850	570	-	-	-	-
950 - 66	1350	2250	1060	950	570	800	320	2400	21000
1060 - 66	-	-	-	1060	570	-	-	-	-
850 - 88	1410	2240	1020	850	630	-	390	-	-
1000 - 88	-	2440	1100	1000	630	-	-	-	-
1120 - 88	1730	2550	1200	1120	630	800	280	2800	28000
1000 - 99	-	2440	1100	1000	690	850	-	-	-
1120 - 99	1720	2550	1300	1120	690	850	280	3050	33000
1250 - 110	1900	3000	1200	1250	750	850	80	3325	45000

*Dimensions of horizontally offset SVAL on request.

¹⁾ Gearbox standard design (dry). Dimensions and weights not strictly binding. Subject to changes.

SVA series

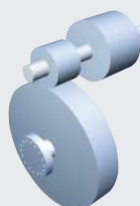
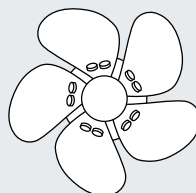
Reduction gearbox for propulsion with controllable pitch propeller



Counter rotation
of input and output.

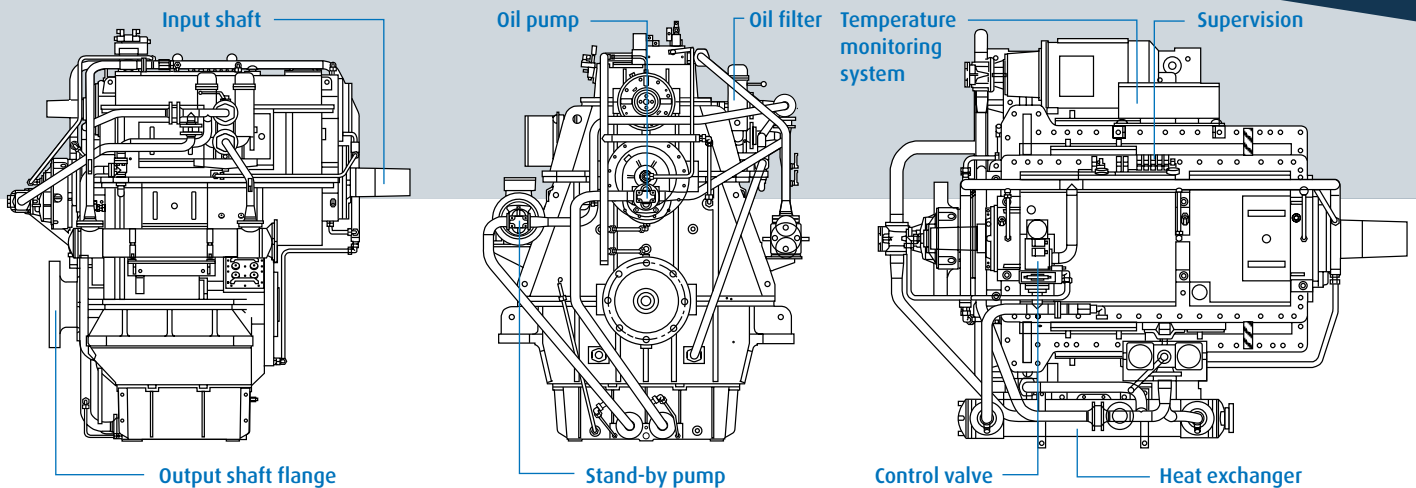
SVAL series

Reduction gearbox for propulsion with controllable pitch propeller



Counter rotation
of input and output.

Standards SVA/SVAL 750-1250



Basic Equipment

- Housing made from grey cast iron or steel in torsion stiff design, rigid mounting
- Spur wheels helically toothed, case hardened and tooth flank ground
- Built-in hydraulically operated disc clutch with steel/sinter friction surface (SVAL only)
- Smooth engagement by adapted pressure increase during shifting (SVAL only)
- The pinion and output shaft are supported in slide bearings. The input shaft with clutch and the PTO shaft are supported in roller bearings

Scope of Supply

STANDARD

- Integrated oil sump. Common circuit for operating pressure and lube oil. Oil pump and oil filter accessible from the outside
- Fitted heat exchanger for cooling water inlet temperature of max. 32 °C, seawater resistant
- Built-on control valve, electrically or pneumatically operated (SVAL only)
- Emergency control: in case of failure of operating pressure mechanical force locking of the disc clutch is possible (SVAL only)
- Input: free shaft end with taper 1:30
- Output: forged-on-flange

Supervision

1. pressure switch – operating pressure too low
pressure switch clutch „on“ „off“ (SVAL only)
2. temperature sensor (2xPT100) – oil temperature behind heat exchanger
3. temperature supervision system of slide bearings
4. filter contamination – electrical signal for “filter contaminated”
5. thermometer – oil temperature before and behind heat exchanger
6. pressure gauge for operating oil pressure

- Paint coating with synthetic resin varnish. Colour: RAL 7023 concrete grey

EXTRAS

- Supervision instruments
- Special PTO executions
- Spare part kit as per classification rules
- Paint coating with synthetic resin varnish in all RAL-colours
- Heat exchanger for cooling water temperature higher than 32 °C
- Special reduction ratios
- Stand-by or trailing pump

Subject to changes



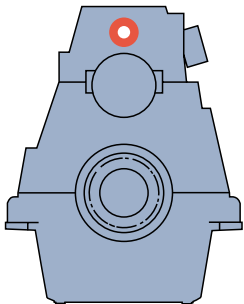
O P T I O N S A N D F E A T U R E S



Options

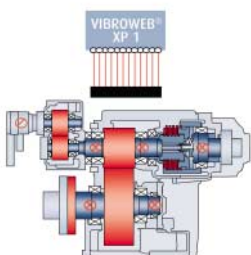
SINGLE POWER TAKE OFF (PTO) SINGLE POWER TAKE IN (PTI)

If required, the gearboxes can be fitted with additional Power Take Off (PTO) and Power Take In (PTI).



CONDITION MONITORING

Monitoring for all key data for proactive maintenance and management.



UNATTENDED MACHINERY SPACE

All gearboxes can be supplied with additional supervision instruments, according to classification society rules, enabling the operator to take all necessary information from the bridge.



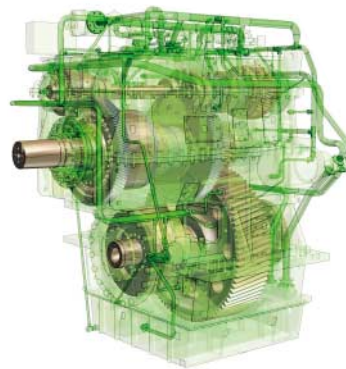
OD-BOX

For all customary CPP systems, the output shaft can be provided with a central bore and a connection for the oil distributor box.



POWER TAKE OFF (PTO)-/ POWER TAKE HOME (PTH)- COMBINATION

Primarily driven PTO in combination with secondary PTH. Different propeller speed for PTH-operation or for operation with main engine possible.



Duty Cycle Classification

CONTINUOUS DUTY



- Continuous operation with little or no variations in engine speed and power
- Average engine operating hours: unlimited
- Allowable hull forms: semi-displacement, displacement
- Allowable applications: commercial vessels



REINTJES GmbH
Eugen-Reintjes-Straße 7
D-31785 Hameln
Telefon + 49 51 51/104-0
Fax + 49 51 51/104-300
www.reintjes-gears.de